



Research Intelligence

Civic Engagement, Urban Planning and Mobile Technologies

Dr. Anders Karlsson, VP Strategic Alliances
Global Academic Relations

April 2017



Empowering Knowledge

A Networked World..



Subscription penetration (percent of population)

Time for Civic Engagement



<https://www.youtube.com/watch?v=DNjppqm73GBY>

POKÉMON GO

URBAN PLANNING

How Pokémon Go is improving your city

Millions of new eyes—and feet—on the street

BY ALISSA WALKER | @AWALKERINLA | DEC 12, 2016, 2:03PM EST



TWEET



SHARE



PIN





ONE SERVICE, AN ENGAGED COMMUNITY FOR A BETTER LIVING ENVIRONMENT



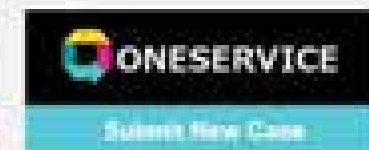
Have you been using the OneService App?



Together as OneService
MSO will continue to build the OneService



Municipal Services Office to
Improve Service Delivery



Transforming Our
Urban Landscape

Working Together to
Deliver Better Services



[HOME](#)

[ABOUT](#)

[PARTICIPATE](#)

[PRESS](#)

[WE STAND BEHIND H4S](#)

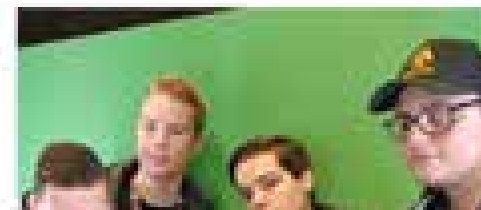
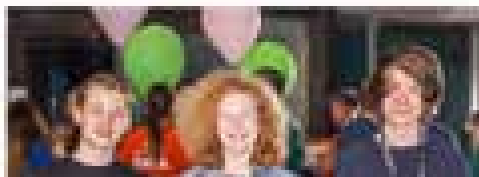
[FOR PARTICIPANTS](#)

[VIDEO](#)



HACK FOR SWEDEN

Winners 2017



(UN) Voluntary Energy Saving after Japan 2011 Triple Disaster

Electricity Conservation Measures We Request
We ask for your understanding and cooperation for energy reduction related electricity usage (10% reduction)

Electricity Conservation Measures (10% Cut)			
	Our Request	Reduction Amount	Year
ALL HOUSEHOLDS	Stop using air conditioning in 2011	10% 1,500W	<input type="checkbox"/>
	Stop using hair driers, clothes irons, etc.	10% 1,000W	<input type="checkbox"/>
	Stop using the heater with ventilation device in winter	50% 5,000W	<input type="checkbox"/>
WORKPLACES	Stop using the long-distance air conditioner (over 100m ²) in winter (only) after the end of the year	2% 20W	<input type="checkbox"/>
OFFICE	Stop all work-related travel in 2011	5% 500W	<input type="checkbox"/>
GOVERNMENT	Stop using elevators, escalators, etc. in 2011	2% 20W	<input type="checkbox"/>
PUBLIC BUILDINGS (Governmental Buildings, etc.)	Stop using escalators, elevators, etc. in 2011	1% 10W	<input type="checkbox"/>
	Stop using air conditioners		<input type="checkbox"/>
ALL SCHOOLS	Stop using air conditioning in 2011	2% 20W	<input type="checkbox"/>
STADIUMS (Sports Stadiums)	Stop using air conditioning in 2011	2% 20W	<input type="checkbox"/>

Electricity conservation is an important activity for us to reduce CO₂ emissions.

These requests, including a 10% electricity usage reduction for all households, are not an obligation, but we do hope you will cooperate.

Look up the electricity cost please see P.16 as a reference for achieving the target reduction rate for electricity usage (10%).



We ask for your understanding and cooperation for energy reduction related electricity usage (10% reduction).

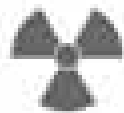
We kindly ask for your understanding and cooperation for reducing electricity consumption.



Source: Website of TEPCO, (TEPCO 2011d) plus TEPCO pamphlet sent to households



<http://blog.safecast.org/>



RADIATION

Safecast maintains the largest open dataset of background radiation measurements ever collected. Over 50 million readings to date and growing daily.



AIR QUALITY

Safecast is currently building out a network of sensors to monitor PM1.0, PM2.5, Carbon Monoxide, Nitrogen Dioxide, Ozone and Methane.



OPEN DATA

All data collected by Safecast is released under a CC0 public domain designation. Anyone is free to use it for free with no licensing restrictions.



International Journal of Information Management

Volume 37, Issue 3, June 2017, Pages 111–113



Research note

Citizens as planners: Harnessing information and values from the bottom-up

Suzana Porto Enoch^a, Akshay Bhargava^b

[View full text](#)

[Download PDF](#)

[View article](#)

[View references](#)

[View citations](#)

[View metrics](#)

[View comments](#)

[View abstract](#)

[View introduction](#)

[View conclusion](#)

[View acknowledgements](#)

[View disclosures](#)

[View funding](#)

[View conflicts of interest](#)

[View declarations](#)

[View disclosures](#)

[View disclosures](#)

[View disclosures](#)

[View disclosures](#)

[View disclosures](#)

[View disclosures](#)

[View disclosures](#)

[View disclosures](#)

[View disclosures](#)

[View disclosures](#)

[View disclosures](#)

[View disclosures](#)

[View disclosures](#)

[View disclosures](#)

[View disclosures](#)

[View disclosures](#)

Keywords

Participatory platforms, Citizen engagement, Civic engagement, Technology platforms

Recommended articles

[Mobile-based assessment: Investigating the factors...](#)
2017, Computers & Education

[An Intelligent Location-Based Service System \(ILBS\)...](#)
2017, Case Studies on Transport Policy

[The use of mobile technology for online shopping in...](#)
2017, Telematics and Informatics

Upcoming articles

Citing articles (0)

Related book content



Ethics &
Principles
for Science
& Society
Policy-Making

- Plan anticipatively
- Expand the pool of solvers
- Analyze by default
- Diversify citizen roles
- Leverage technology



PROFESSIONAL JOBS SUMMITS BARADUCS 53

Community engagement is what universities should be for

Working in our local areas is much more than charity for higher education institutions, says

Stuart Loring

May 25, 2016

By Stuart Loring



About Us / News & Events / Schools & Units

COMMITMENT TOPICS PROGRAMS ACTION



Commitment

Ideas, innovation, and discovery are indispensable elements in combating global challenges.



<https://www.timeshighereducation.com/blog/community-engagement-what-universities-should-be>

Universities have an "accountability to the future"—a special role and a special responsibility in confronting the challenges of climate change and sustainability.

<https://green.harvard.edu/commitment>



From Elsevier's perspective as Information Analytics Company

- Citizens as voluntary data generators
- The social media space as new arena
- Universities as catalyzers for engagement